



6" (150 mm)

Water Filled Submersible Motor

50 Hz.

www.virasubmersible.com



Features

- 6" Water filled submersible motor.
- Easily rewindable (wet wound) induction motor with PE insulated windings.
- Corrosion resistant stainless steel stator jacket and shaft.
- Mechanical shaft seal (Carbon/Ceramic) provided.
- Water lubricated radial and axial thrust bearings.
- Counter thrust bearing.
- Motors are pre-filled with clean water + Glycol mixture.
- High efficiency electrical design (lower operating cost).
- Tropicalized design (lower winding temperature).
- 6" NEMA coupling flange.
- Pressure compensation diaphragm.

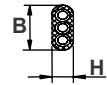
Specifications

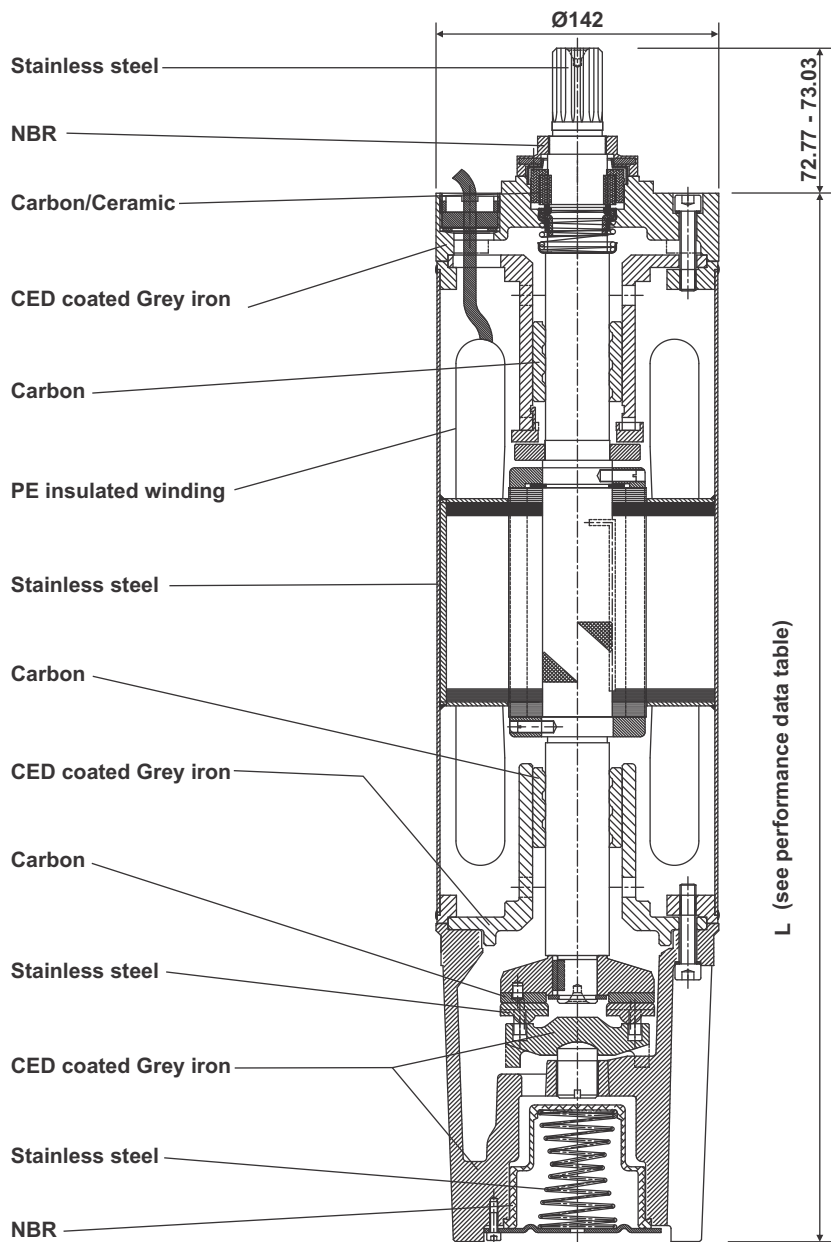
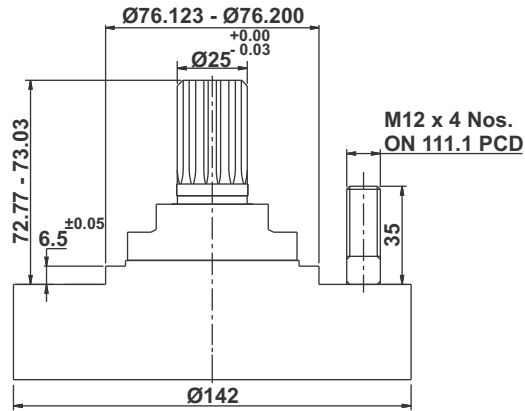
- Ratings: Three phase - 4 to 18,5 kW, 50 Hz
4 to 22 kW, 60 Hz
- Supply voltages (Tolerance +10% / -15%):
50 Hz, 3 phase, 380 V, 400 V, 415 V
60 Hz, 3 phase, 230 V, 380 V, 460 V
- Degree of protection: IP 68
- Continuous duty
- Ambient temperature: 45°C
- Rotation: Three phase - CCW and CW
- Maximum nos. of starts/hour: 20
- Water pH: 6,5 - 8
- Minimum cooling flow along the motor:
4 to 15 kW - 15 cm/sec
18,5 to 22 kW - 30 cm/sec
- Motor protection: Select thermal overload protection with trip time < 10 sec. at 5 x I_n
- Maximum submerged depth: 250 metres
- Mounting: vertical / horizontal.

Special features on request

- Mechanical shaft seal Sic/Sic.
- Built-in PT 100 temperature sensor.
- Special voltages.
- Double cable for Star - Delta operation.

Cable data

kW	Type of start	Cable x Leads x Size (mm ²)	Length [m]	H x B [mm]	
4 - 22	DOL	1 x 3 x 6	3,5	7,9 x 18,7	



Shaft

Spline shaft: 15 teeth, 16/32 pitch, module 1.5875, 30° pressure angle, coupling tolerance 5 as per ANSI B.92.1, confirming with NEMA 6".



Performance data

50 Hz

Motor type	Pn		Ka [N]	Un [V]	In	Ist/In	n [min ⁻¹]	η [%]			COS φ			Tn [Nm]	L [mm]	Peso bruto Gross weight Poids brut [kg]	Volumen bruto Gross volume Volume brut [m ³]
	kW	HP						50%	75%	100%	50%	75%	100%				
VCW61554732	4	5,5	15500	380	10,1	4,12	2890	69,3	73,0	75,5	0,61	0,71	0,80	13,22	583	48,5	0,0560
				400	9,50	4,02	2910	70,8	74,3	76,0	0,60	0,72	0,80	13,13			
				415	9,50	4,12	2910	71,3	74,6	76,0	0,58	0,69	0,77	13,13			
VCW61754732	5,5	7,5	15500	380	13,6	4,12	2855	71,0	75,0	76,5	0,63	0,75	0,82	18,40	613	52,2	0,0560
				400	12,8	4,02	2870	72,8	76,3	77,5	0,61	0,73	0,81	18,31			
				415	12,7	4,12	2885	73,0	76,5	78,0	0,60	0,72	0,80	18,22			
VCW62104732	7,5	10	15500	380	18,0	5,20	2860	72,8	76,0	77,5	0,64	0,75	0,82	25,05	663	54,7	0,0560
				400	17,1	5,02	2870	74,0	77,3	78,5	0,62	0,74	0,81	24,97			
				415	16,6	4,94	2880	74,8	77,8	79,0	0,60	0,71	0,80	24,88			
VCW62124732	9,3	12,5	15500	380	21,7	5,22	2845	74,0	77,8	79,5	0,65	0,75	0,82	31,23	703	61,0	0,0560
				400	20,8	5,12	2860	76,3	79,3	80,5	0,62	0,74	0,80	31,07			
				415	20,4	5,02	2875	76,5	79,5	80,7	0,60	0,72	0,79	30,90			
VCW62154732	11	15	15500	380	25,1	5,24	2850	75,3	78,3	80,2	0,65	0,75	0,83	36,87	751	62,9	0,0560
				400	24,0	5,12	2870	76,8	80,3	81,5	0,62	0,74	0,82	36,62			
				415	23,8	5,30	2880	77,2	80,6	81,8	0,60	0,72	0,80	36,50			
VCW62174732	13	17,5	15500	380	29,5	5,00	2860	75,8	78,8	80,5	0,64	0,76	0,83	43,43	781	68,5	0,0560
				400	28,5	5,10	2880	77,3	80,3	81,5	0,61	0,75	0,81	43,12			
				415	28,4	5,20	2880	77,8	80,8	82,0	0,59	0,72	0,78	43,12			
VCW62204732	15	20	15500	380	33,2	5,20	2860	76,8	80,0	81,8	0,65	0,77	0,84	50,11	851	76,6	0,0660
				400	31,6	5,10	2880	78,3	81,3	82,5	0,64	0,76	0,83	49,76			
				415	31,5	5,28	2880	78,8	81,8	83,0	0,60	0,73	0,80	49,76			
VCW62254732	18,5	25	15500	380	40,9	5,12	2860	77,3	80,3	81,9	0,66	0,78	0,84	61,80	911	83,0	0,0660
				400	39,4	5,20	2880	78,4	81,4	82,5	0,64	0,77	0,82	61,37			
						5,25	2880	78,8	81,8	83,1	0,61	0,73	0,80	61,37			

Pn: Rated output
 Ka: Thrust load
 Un: Rated voltage
 In: Rated current
 Ist/In: Locked rotor current/Rated amperage
 n: Rated speed
 η: Efficiency
 cos φ: Power factor
 Tn: Rated torque
 L: Motor length



Features

- 6" Water filled stainless steel submersible motor.
- Easily rewindable (wet wound) induction motor with PE insulated windings.
- Completely stainless steel AISI 304 construction.
- Mechanical shaft seal (Carbon/Ceramic) provided.
- Water lubricated radial and axial thrust bearings.
- Counter thrust bearing.
- Motors are pre-filled with clean water + Glycol mixture.
- Shaft extension made of stainless steel AISI 316.
- High efficiency electrical design (lower operating cost).
- Tropicalized design (lower winding temperature).
- 6" NEMA coupling flange.
- Pressure compensation diaphragm.

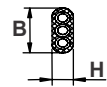
Specifications

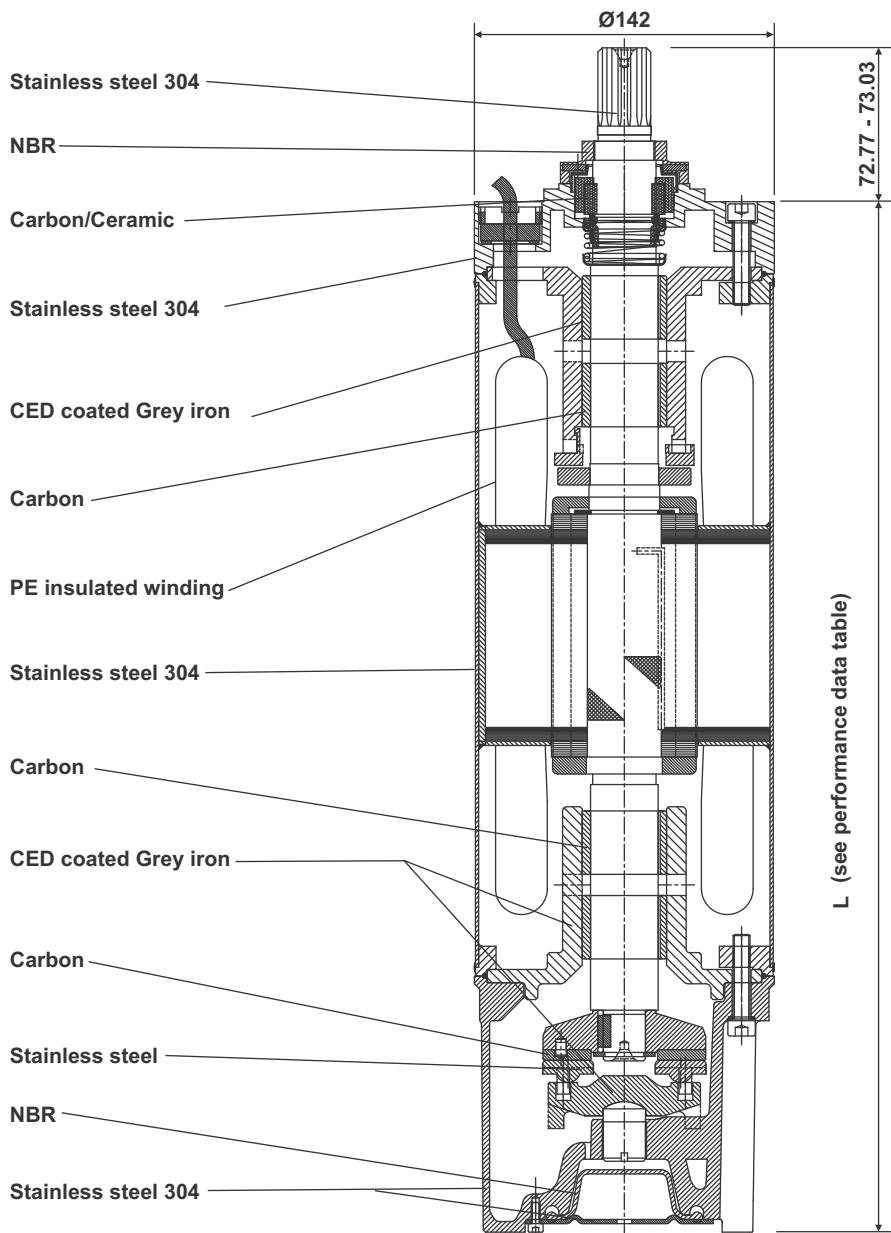
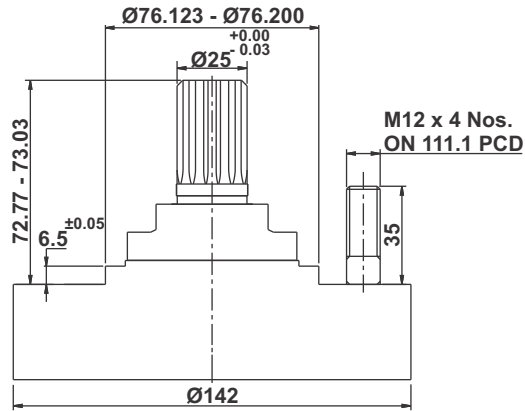
- Ratings: Three phase - 4 to 18,5 kW, 50 Hz
4 to 22 kW, 60 Hz
- Supply voltages (Tolerance +10% / -15%):
50 Hz, 3 phase, 380 V, 400 V, 415 V
60 Hz, 3 phase, 230 V, 380 V, 460 V
- Degree of protection: IP 68
- Continuous duty
- Ambient temperature: 45°C
- Rotation: Three phase - CCW and CW
- Maximum nos. of starts/hour: 20
- Water pH: 6,5 - 8
- Minimum cooling flow along the motor:
4 to 15 kW - 15 cm/sec
18,5 to 22 kW - 30 cm/sec
- Motor protection: Select thermal overload protection with trip time < 10 sec. at 5 x I_n
- Maximum submerged depth: 250 metres
- Mounting: vertical / horizontal.

Special features on request

- Mechanical shaft seal Sic/Sic.
- Built in PT 100 temperature sensor.
- Special voltages.
- Double cable for Star - Delta operation.

Cable data

kW	Type of start	Cable x Leads x Size (mm ²)	Length [m]	H x B [mm]	
4 - 22	DOL	1 x 3 x 6	3,5	7,9 x 18,7	



Shaft

Spline shaft: 15 teeth, 16/32 pitch, module 1.5875, 30° pressure angle, coupling tolerance 5 as per ANSI B.92.1, confirming with NEMA 6".



Performance data

50 Hz

Motor type	Pn		Ka [N]	Un [V]	In	Ist/In	n [min ⁻¹]	η [%]			COS φ			Tn [Nm]	L [mm]	Gross weight [kg]	Gross volume [m ³]
	kW	HP						50%	75%	100%	50%	75%	100%				
VSW61554732	4	5,5	15500	380	10,1	4,12	2890	69,3	73,0	75,5	0,61	0,71	0,80	13,22	545	44,3	0,0560
				400	9,50	4,02	2910	70,8	74,3	76,0	0,60	0,72	0,80	13,13			
				415	9,50	4,12	2910	71,3	74,6	76,0	0,58	0,69	0,77	13,13			
VSW61754732	5,5	7,5	15500	380	13,6	4,12	2855	71,0	75,0	76,5	0,63	0,75	0,82	18,40	575	48,1	0,0560
				400	12,8	4,02	2870	72,8	76,3	77,5	0,61	0,73	0,81	18,31			
				415	12,7	4,12	2885	73,0	76,5	78,0	0,60	0,72	0,80	18,22			
VSW62104732	7,5	10	15500	380	18,0	5,20	2860	72,8	76,0	77,5	0,64	0,75	0,82	25,05	625	53,5	0,0560
				400	17,1	5,02	2870	74,0	77,3	78,5	0,62	0,74	0,81	24,97			
				415	16,6	4,94	2880	74,8	77,8	79,0	0,60	0,71	0,80	24,88			
VSW62124732	9,3	12,5	15500	380	21,7	5,22	2845	74,0	77,8	79,5	0,65	0,75	0,82	31,23	665	58,0	0,0560
				400	20,8	5,12	2860	76,3	79,3	80,5	0,62	0,74	0,80	31,07			
				415	20,4	5,02	2875	76,5	79,5	80,7	0,60	0,72	0,79	30,90			
VSW62154732	11	15	15500	380	25,1	5,24	2850	75,3	78,3	80,2	0,65	0,75	0,83	36,87	713	62,0	0,0560
				400	24,0	5,12	2870	76,8	80,3	81,5	0,62	0,74	0,82	36,62			
				415	23,8	5,30	2880	77,2	80,6	81,8	0,60	0,72	0,80	36,50			
VSW62174732	13	17,5	15500	380	29,5	5,00	2860	75,8	78,8	80,5	0,64	0,76	0,83	43,43	743	65,1	0,0560
				400	28,5	5,10	2880	77,3	80,3	81,5	0,61	0,75	0,81	43,12			
				415	28,4	5,20	2880	77,8	80,8	82,0	0,59	0,72	0,78	43,12			
VSW62204732	15	20	15500	380	33,2	5,20	2860	76,8	80,0	81,8	0,65	0,77	0,84	50,11	813	73,5	0,0660
				400	31,6	5,10	2880	78,3	81,3	82,5	0,64	0,76	0,83	49,76			
				415	31,5	5,28	2880	78,8	81,8	83,0	0,60	0,73	0,80	49,76			
VSW62254732	18,5	25	15500	380	40,9	5,12	2860	77,3	80,3	81,9	0,66	0,78	0,84	61,80	873	79,5	0,0660
				400	39,4	5,20	2880	78,4	81,4	82,5	0,64	0,77	0,82	61,37			
						5,25	2880	78,8	81,8	83,1	0,61	0,73	0,80	61,37			

Pn: Rated output
 Ka: Thrust load
 Un: Rated voltage
 In: Rated current
 Ist/In: Locked rotor current/Rated amperage
 n: Rated speed
 η: Efficiency
 cos φ: Power factor
 Tn: Rated torque
 L: Motor length



Features

- 6" Water filled heavy duty submersible motor.
- Easily rewindable (wet wound) induction motor with PE insulated windings.
- Corrosion resistant stainless steel stator jacket and shaft.
- Mechanical shaft seal (Carbon/Ceramic) provided.
- Water lubricated heavy duty radial and axial thrust bearings.
- Counter thrust bearing.
- Motors are pre-filled with clean water + Glycol mixture.
- High efficiency electrical design (lower operating cost).
- Tropicalized design (lower winding temperature).
- 6" NEMA coupling flange.
- Pressure compensation diaphragm.

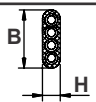
Specifications

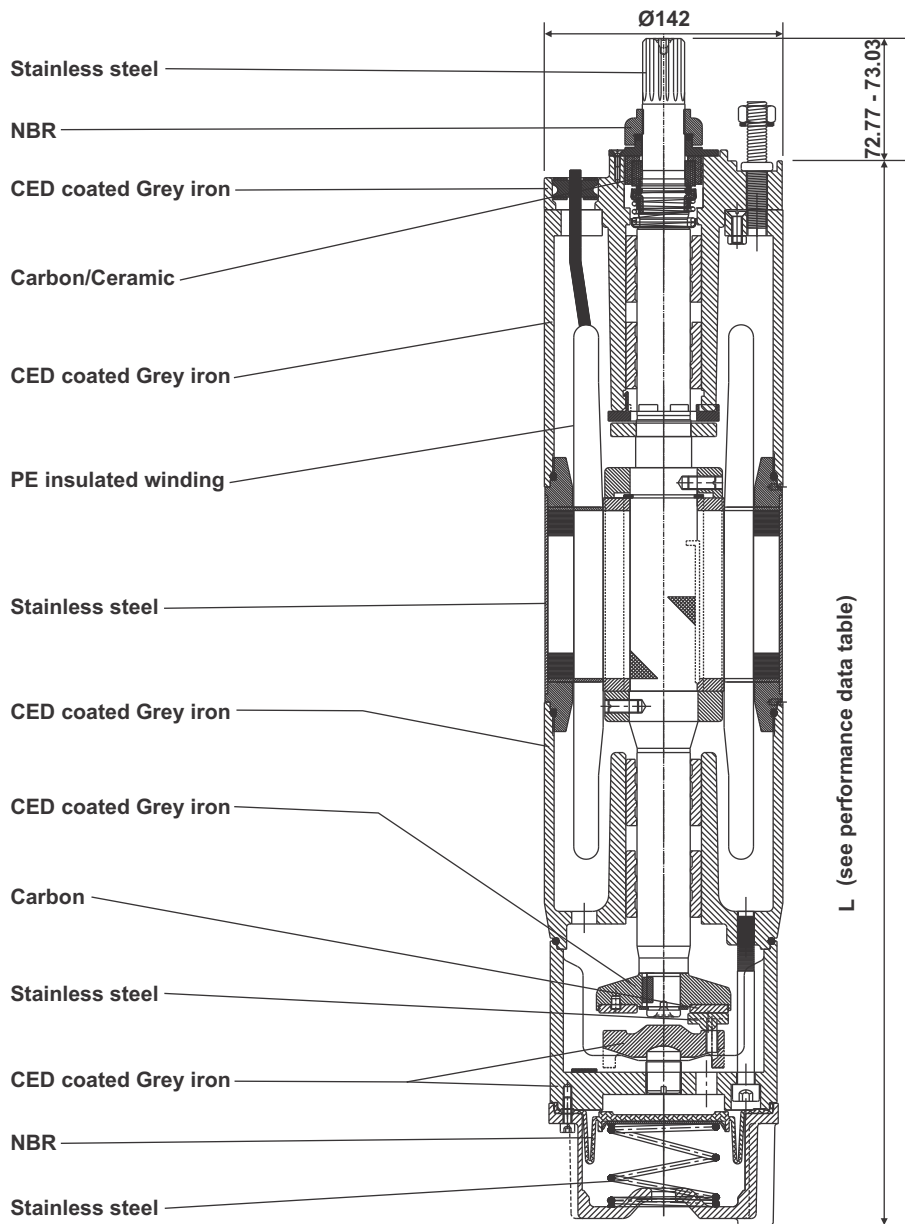
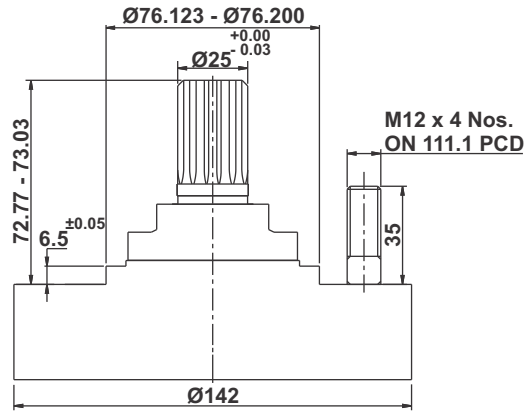
- Ratings: Three phase - 4 to 45 kW, 50 Hz
4 to 45 kW, 60 Hz
- Supply voltages (Tolerance +10% / -15%):
50 Hz, 3 phase, 380 V, 400 V, 415 V
60 Hz, 3 phase, 230 V, 380 V, 460 V
- Degree of protection: IP 68
- Continuous duty
- Ambient temperature: 45°C
- Rotation: Three phase - CCW and CW
- Maximum nos. of starts/hour:
4 to 22 kW - 20
26 to 45 kW - 15
- Water pH: 6,5 - 8
- Minimum cooling flow along the motor:
4 to 15 kW - 15 cm/sec
18,5 to 45 kW - 30 cm/sec
- Motor protection: Select thermal overload protection with trip time < 10 sec. at 5 x I_n
- Maximum submerged depth: 250 metres
- Mounting: vertical / horizontal (up to 30 kW).

Special features on request

- Mechanical shaft seal Sic/Sic.
- Built-in PT 100 temperature sensor.
- Special voltages.
- Double cable for Star - Delta operation.

Cable data

kW	Type of start	Cable x Leads x Size (mm ²)	Length [m]	H x B [mm]	
4 - 45	DOL	1 x 4 x 6	3,5	7,9 x 24,3	



Shaft

Spline shaft: 15 teeth, 16/32 pitch, module 1.5875, 30° pressure angle, coupling tolerance 5 as per ANSI B.92.1, confirming with NEMA 6".

Performance data

50 Hz

Motor type	Pn		Ka [N]	Un [V]	In	Ist/In	n [min ⁻¹]	η [%]			COS φ			Tn [Nm]	L [mm]	Gross weight [kg]	Gross volume [m ³]
	kW	HP						50%	75%	100%	50%	75%	100%				
VHW61554732	4	5,5	27500	380	9,80	4,10	2900	70,3	74,5	76,0	0,64	0,74	0,82	13,18	678	56,0	0,0560
				400	9,30	4,00	2920	71,3	75,2	76,5	0,62	0,73	0,81	13,08			
				415	9,40	4,10	2920	71,6	74,9	76,2	0,59	0,70	0,78	13,08			
VHW61754732	5,5	7,5	27500	380	13,0	4,10	2865	72,3	76,2	77,8	0,65	0,77	0,84	18,34	708	60,2	0,0560
				400	12,6	4,00	2880	73,3	76,7	78,0	0,63	0,75	0,83	18,25			
				415	12,7	4,10	2895	73,8	77,2	78,5	0,61	0,73	0,81	18,15			
VHW62104732	7,5	10	27500	380	17,3	5,20	2870	73,8	76,9	78,5	0,66	0,77	0,84	24,97	758	65,5	0,0560
				400	16,8	5,00	2880	74,8	77,7	79,0	0,64	0,75	0,83	24,88			
				415	16,5	4,90	2890	75,3	78,2	79,5	0,61	0,73	0,82	24,80			
VHW62124732	9,3	12,5	27500	380	21,0	5,20	2855	75,0	78,7	80,5	0,66	0,76	0,84	31,12	798	69,4	0,0560
				400	20,5	5,10	2870	76,8	79,7	81,0	0,64	0,75	0,82	30,96			
				415	20,2	5,00	2885	77,0	79,9	81,2	0,62	0,73	0,80	30,80			
VHW62154732	11	15	27500	380	24,5	5,20	2860	76,3	79,2	81,2	0,67	0,77	0,85	36,75	833	73,6	0,0560
				400	23,8	5,10	2880	77,3	80,7	82,0	0,64	0,76	0,83	36,49			
				415	23,6	5,30	2890	77,8	80,9	82,2	0,62	0,74	0,81	36,37			
VHW62174732	13	17,5	27500	380	28,9	5,00	2870	76,8	79,7	81,5	0,66	0,77	0,84	43,28	863	76,0	0,0560
				400	28,2	5,10	2890	77,8	80,7	82,0	0,63	0,76	0,82	42,98			
				415	28,1	5,20	2890	78,3	81,2	82,5	0,61	0,73	0,79	42,98			
VHW62204732	15	20	27500	380	32,4	5,20	2870	77,8	80,9	82,8	0,68	0,79	0,85	49,93	933	84,4	0,0660
				400	31,4	5,10	2890	78,8	81,7	83,0	0,66	0,77	0,84	49,60			
				415	31,2	5,30	2890	79,3	82,2	83,5	0,62	0,74	0,81	49,60			
VHW62254732	18,5	25	27500	380	39,9	5,10	2860	78,2	81,3	82,8	0,69	0,79	0,85	61,80	993	90,5	0,0660
				400	39,0	5,20	2880	78,7	81,8	83,0	0,65	0,77	0,83	61,37			
				415	39,3	5,25	2890	79,2	82,3	83,6	0,63	0,74	0,81	61,16			
VHW62304732	22	30	27500	380	46,5	5,10	2870	78,3	81,6	83,6	0,70	0,80	0,86	73,24	1053	99,0	0,0660
				400	44,6	5,20	2890	79,2	82,8	84,0	0,66	0,77	0,85	72,73			
				415	45,2	5,15	2900	79,7	83,0	84,3	0,62	0,75	0,83	72,48			
VHW62354732	26	35	27500	380	56,2	5,18	2870	78,7	81,8	83,6	0,70	0,79	0,86	86,56	1133	113,5	0,1330
				400	55,4	5,20	2890	79,3	82,8	84,0	0,65	0,77	0,84	85,96			
				415	56,0	5,15	2900	79,9	83,1	84,3	0,62	0,75	0,82	85,66			
VHW62404732	30	40	27500	380	63,2	5,22	2890	78,9	82,8	84,5	0,71	0,80	0,87	99,18	1183	125,0	0,1330
				400	62,4	5,30	2900	80,1	83,8	85,0	0,65	0,79	0,86	98,84			
				415	63,8	5,32	2900	81,2	84,3	85,6	0,63	0,75	0,83	98,84			
VHW62504732	37	50	27500	380	78,5	5,35	2890	79,7	82,8	84,2	0,71	0,80	0,87	123,18	1313	135,0	0,1400
				400	77,4	5,30	2900	80,2	83,8	85,0	0,66	0,79	0,86	121,90			
				415	79,0	5,32	2900	81,2	84,0	85,2	0,63	0,75	0,84	121,90			
VHW62604732	45	60	27500	380	93,0	5,36	2890	79,7	82,8	84,5	0,71	0,80	0,87	148,77	1413	148,0	0,1490
				400	88,3	5,31	2900	80,2	83,8	85,5	0,66	0,79	0,86	148,26			
				415	87,1	5,33	2900	81,2	84,0	85,6	0,63	0,75	0,84	148,26			

Pn: Rated output
 Ka: Thrust load
 Un: Rated voltage
 In: Rated current
 Ist/In: Locked rotor current/Rated amperage
 n: Rated speed
 η: Efficiency
 cos φ: Power factor
 Tn: Rated torque
 L: Motor length



Features

- 6" Water filled heavy duty stainless steel submersible motor.
- Easily rewindable (wet wound) induction motor with PE insulated windings.
- Complete stainless steel AISI 304 construction.
- Mechanical shaft seal (Carbon/Ceramic) provided.
- Water lubricated heavy duty radial and axial thrust bearings.
- Counter thrust bearing.
- Motors are pre-filled with clean water + Glycol mixture.
- Shaft extension made of stainless steel AISI 316.
- High efficiency electrical design (lower operating cost).
- Tropicalized design (lower winding temperature).
- 6" NEMA coupling flange.
- Pressure compensation diaphragm.

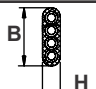
Specifications

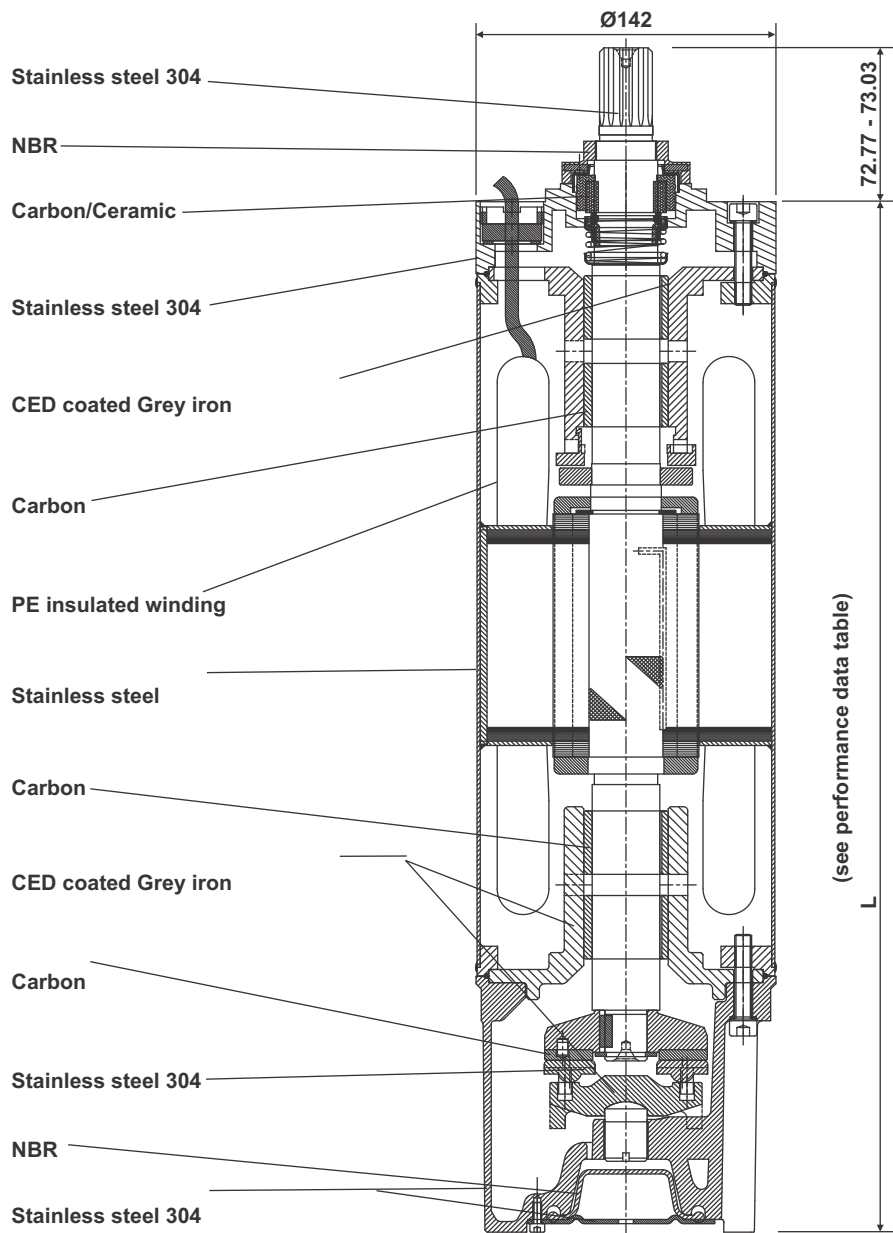
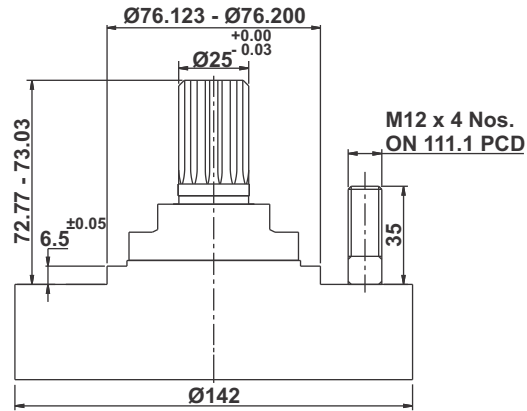
- Ratings: Three phase - 4 to 45 kW, 50 Hz
4 to 45 kW, 60 Hz
- Supply voltages (Tolerance +10% / -15%):
50 Hz, 3 phase, 380 V, 400 V, 415 V
60 Hz, 3 phase, 230 V, 380 V, 460 V
- Degree of protection: IP 68
- Continuous duty
- Ambient temperature: 45°C
- Rotation: Three phase - CCW and CW
- Maximum nos. of starts/hour:
4 to 22 kW - 20
26 to 45 kW - 15
- Water pH: 6,5 - 8
- Minimum cooling flow along the motor:
4 to 15 kW - 15 cm/sec
18,5 to 45 kW - 30 cm/sec
- Motor protection: Select thermal overload protection with trip time < 10 sec. at 5 x I_n
- Maximum submerged depth: 250 metres
- Mounting: vertical / horizontal (up to 30 kW).

Special features on request

- Mechanical shaft seal Sic/Sic.
- Built in PT 100 temperature sensor.
- Special voltages.
- Double cable for Star - Delta operation.

Cable data

kW	Type of start	Cable x Leads x Size (mm ²)	Length [m]	H x B [mm]	
4 - 45	DOL	1 x 4 x 6	3,5	7,9 x 24,3	



Shaft

Spline shaft: 15 teeth, 16/32 pitch, module
 1.5875, 30° pressure angle, coupling tolerance
 5 as per ANSI B.92.1, confirming with NEMA 6".

Performance data

50 Hz

Motor type	Pn		Ka [N]	Un [V]	In	Ist/In	n [min ⁻¹]	η [%]			COS φ			Tn [Nm]	L [mm]	Gross weight [kg]	Gross volume [m ³]
	kW	HP						50%	75%	100%	50%	75%	100%				
VXW61554732	4	5,5	27500	380	9,80	4,10	2900	70,3	74,5	76,0	0,64	0,74	0,82	13,18	635	54,8	0,0560
				400	9,30	4,00	2920	71,3	75,2	76,5	0,62	0,73	0,81	13,08			
				415	9,40	4,10	2920	71,6	74,9	76,2	0,59	0,70	0,78	13,08			
VXW61754732	5,5	7,5	27500	380	13,0	4,10	2865	72,3	76,2	77,8	0,65	0,77	0,84	18,34	665	58,5	0,0560
				400	12,6	4,00	2880	73,3	76,7	78,0	0,63	0,75	0,83	18,25			
				415	12,7	4,10	2895	73,8	77,2	78,5	0,61	0,73	0,81	18,15			
VXW62104732	7,5	10	27500	380	17,3	5,20	2870	73,8	76,9	78,5	0,66	0,77	0,84	24,97	715	64,5	0,0560
				400	16,8	5,00	2880	74,8	77,7	79,0	0,64	0,75	0,83	24,88			
				415	16,5	4,90	2890	75,3	78,2	79,5	0,61	0,73	0,82	24,80			
VXW62124732	9,3	12,5	27500	380	21,0	5,20	2855	75,0	78,7	80,5	0,66	0,76	0,84	31,12	755	67,4	0,0560
				400	20,5	5,10	2870	76,8	79,7	81,0	0,64	0,75	0,82	30,96			
				415	20,2	5,00	2885	77,0	79,9	81,2	0,62	0,73	0,80	30,80			
VXW62154732	11	15	27500	380	24,5	5,20	2860	76,3	79,2	81,2	0,67	0,77	0,85	36,75	790	73,2	0,0560
				400	23,8	5,10	2880	77,3	80,7	82,0	0,64	0,76	0,83	36,49			
				415	23,6	5,30	2890	77,8	80,9	82,2	0,62	0,74	0,81	36,37			
VXW62174732	13	17,5	27500	380	28,9	5,00	2870	76,8	79,7	81,5	0,66	0,77	0,84	43,28	820	73,7	0,0560
				400	28,2	5,10	2890	77,8	80,7	82,0	0,63	0,76	0,82	42,98			
				415	28,1	5,20	2890	78,3	81,2	82,5	0,61	0,73	0,79	42,98			
VXW62204732	15	20	27500	380	32,4	5,20	2870	77,8	80,9	82,8	0,68	0,79	0,85	49,93	890	84,0	0,0660
				400	31,4	5,10	2890	78,8	81,7	83,0	0,66	0,77	0,84	49,60			
				415	31,2	5,30	2890	79,3	82,2	83,5	0,62	0,74	0,81	49,60			
VXW62254732	18,5	25	27500	380	39,9	5,10	2860	78,2	81,3	82,8	0,69	0,79	0,85	61,80	950	88,0	0,0660
				400	39,0	5,20	2880	78,7	81,8	83,0	0,65	0,77	0,83	61,37			
				415	39,3	5,25	2890	79,2	82,3	83,6	0,63	0,74	0,81	61,16			
VXW62304732	22	30	27500	380	46,5	5,10	2870	78,3	81,6	83,6	0,70	0,80	0,86	73,24	1010	93,4	0,0660
				400	44,6	5,20	2890	79,2	82,8	84,0	0,66	0,77	0,85	72,73			
				415	45,2	5,15	2900	79,7	83,0	84,3	0,62	0,75	0,83	72,48			
VXW62354732	26	35	27500	380	56,2	5,18	2870	78,7	81,8	83,6	0,70	0,79	0,86	86,56	1090	111,7	0,1330
				400	55,4	5,20	2890	79,3	82,8	84,0	0,65	0,77	0,84	85,96			
				415	56,0	5,15	2900	79,9	83,1	84,3	0,62	0,75	0,82	85,66			
VXW62404732	30	40	27500	380	63,2	5,22	2890	78,9	82,8	84,5	0,71	0,80	0,87	99,18	1140	120,0	0,1330
				400	62,4	5,30	2900	80,1	83,8	85,0	0,65	0,79	0,86	98,84			
				415	63,8	5,32	2900	81,2	84,3	85,6	0,63	0,75	0,83	98,84			
VXW62504732	37	50	27500	380	78,5	5,35	2890	79,7	82,8	84,2	0,71	0,80	0,87	123,18	1270	131,0	0,1400
				400	77,4	5,30	2900	80,2	83,8	85,0	0,66	0,79	0,86	121,90			
				415	79,0	5,32	2900	81,2	84,0	85,2	0,63	0,75	0,84	121,90			
VXW62604732	45	60	27500	380	93,0	5,36	2890	79,7	82,8	84,5	0,71	0,80	0,87	148,77	1370	142,7	0,1490
				400	88,3	5,31	2900	80,2	83,8	85,5	0,66	0,79	0,86	148,26			
						5,33	2900	81,2	84,0	85,6	0,63	0,75	0,84	148,26			

Pn: Rated output
 Ka: Thrust load
 Un: Rated voltage
 In: Rated current
 Ist/In: Locked rotor current/Rated amperage
 n: Rated speed
 η: Efficiency
 cos φ: Power factor
 Tn: Rated torque
 L: Motor length

